



HIGH ROAD BUSHEY, WD23

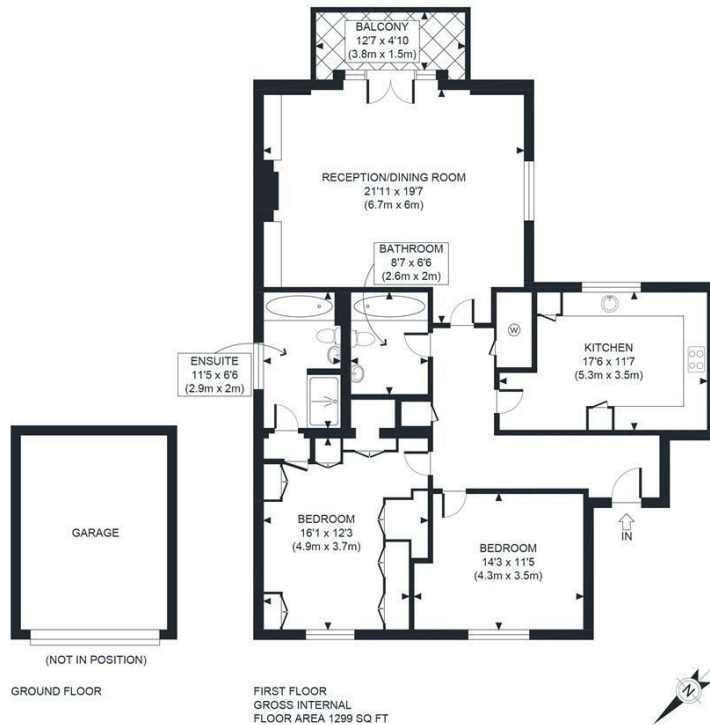
£650,000
LEASEHOLD

A spacious and well-presented two-bedroom apartment extending to approximately 1,299 sq ft, forming part of the exclusive Highfield development in the heart of Bushey Heath.

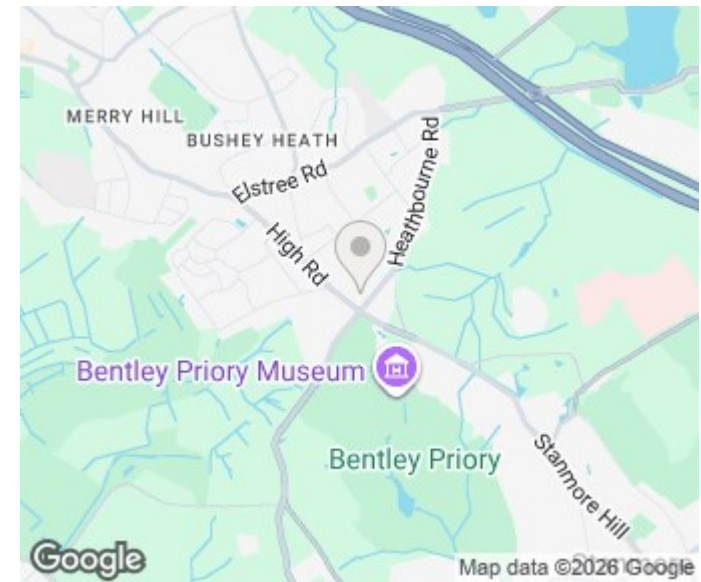
The apartment offers bright and generously proportioned accommodation throughout, with a superb reception and dining room opening onto a private balcony, creating an excellent space for both everyday living and entertaining. The separate kitchen is well-appointed with ample worktop and storage space.

The principal bedroom benefits from fitted wardrobes and an en-suite bathroom, whilst the second double bedroom is served by a separate family bathroom. The property further benefits from excellent storage, a private garage, additional parking space, and beautifully maintained communal grounds.

PMP | INTERNATIONAL



APPROX. GROSS INTERNAL FLOOR AREA 1299 SQ FT / 121 SQM <small>Disclaimer: Floor plan measurements are approximate and are for illustrative purposes only. While we do not doubt the floor plan accuracy and completeness, you or your advisors should conduct a careful, independent investigation of the property in respect of monetary valuation</small>	Highfield <small>date 08/07/26</small>
---	--



Energy Efficiency Rating		Current	Potential
Very energy efficient - lower running costs			
(92 plus) A			
(81-91) B			
(69-80) C			
(55-68) D			
(39-54) E			
(21-38) F			
(1-20) G			
Not energy efficient - higher running costs			
England & Wales	EU Directive	2002/91/EC	

Agents Note: Whilst every care has been taken to prepare these particulars, they are for guidance purposes only. All measurements are approximate and are for general guidance purposes only and whilst every care has been taken to ensure their accuracy, they should not be relied upon and potential buyers/tenants are advised to recheck the measurements

London
 PMP International
 94 Belsize Lane
 Belsize Park
 London
 NW3 5BE

020 7701 2878
 info@pmpi.co.uk
 www.pmpi.co.uk

PMP | INTERNATIONAL